

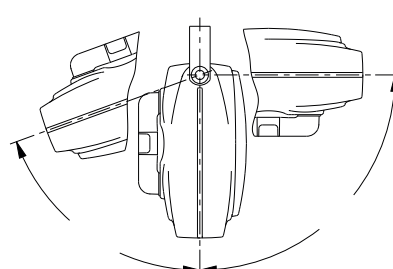
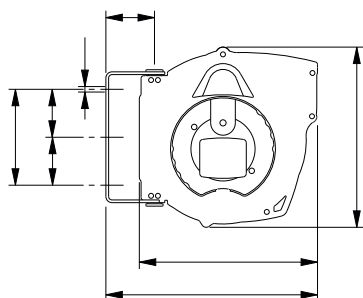
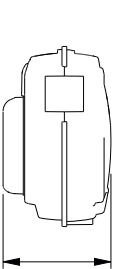
- Riavvolgimento automatico a molla
- Struttura in materiale plastico antiurto
- Staffa di fissaggio orientabile a parete in acciaio verniciato
- Sistema di bloccaggio del cavo alla lunghezza desiderata, facilmente eliminabile ed ispezionabile da parte dell'utente
- Conformi alle norme CE
- Automatic spring rewinding
- Plastic outer casing
- Steel swivelling wall bracket
- Ratched stop device easily inspectable and removable by the end user
- CE approved
- Kabel-Aufrollautomatik mit Federeantrieb
- Gestell aus schlagfestem Kunststoff
- Schwenkbare Wandhalterung aus lackiertem Stahl
- Sonder-Kabel-Arretierungsvorrichtung, einfach abschaltbar und kontrollierbar
- Konform nach CE-Normen
- Enroulement automatique à ressort
- Coques en plastique antichoc
- Etrier de fixation murale en acier peint
- Système de blocage du câble à la longueur désirée, facilement éliminable et inspectable de la part de l'utilisateur
- Conformes aux normes CE

Testato secondo le norme / Tested according to:

- ISO/IEC 11801 & ISO/IEC 61935
- ANSI/TIA/EIA-568-C



		Tipo Cavo CABLE	Codice	V max	A max	Peso Kg	Dimensioni (cm) cm	Pallet
4 x (2 x 0,15) mm²	15 m	CAT 5e	811600	48 V	2 A	4 Kg	28 x 28 x 19	96 pz



Roll Classic Plus

LAN Cable



Predisposto per Slow Motion
Slow Motion available



**Optional
SLOWMOTION**
Cod. 707210



Mavel